

TRIGGER

TRIM

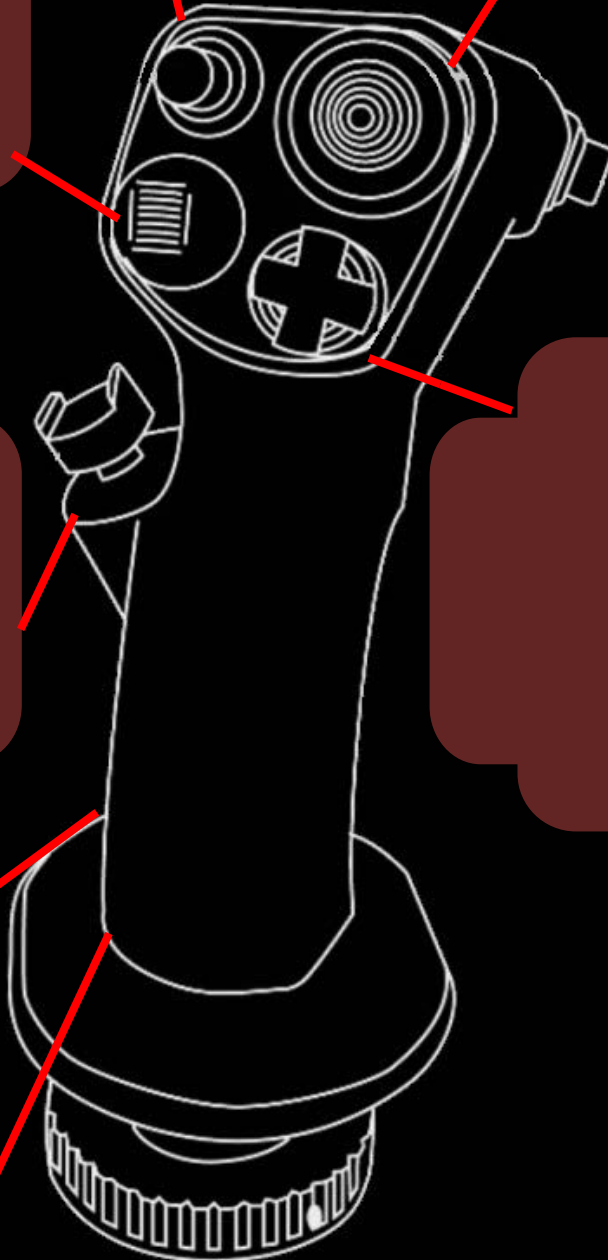
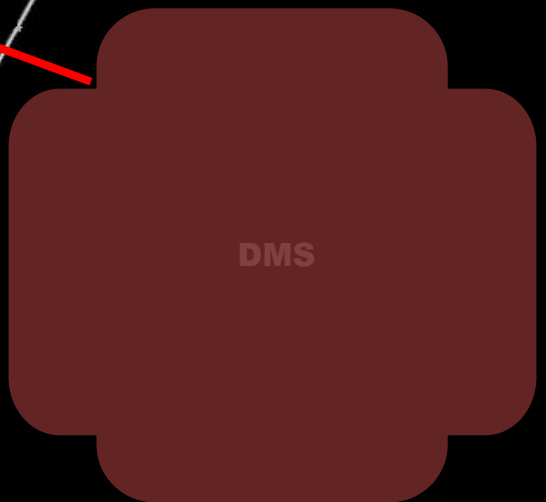
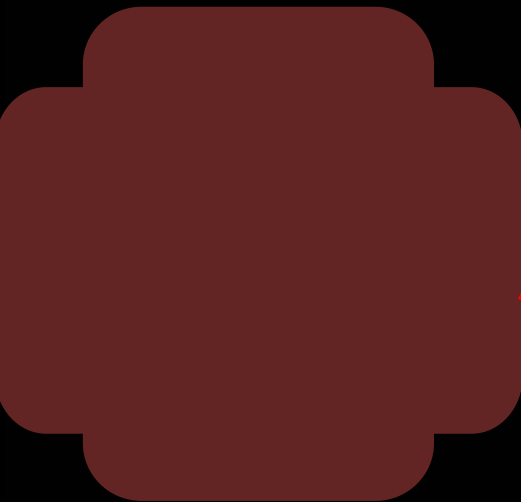
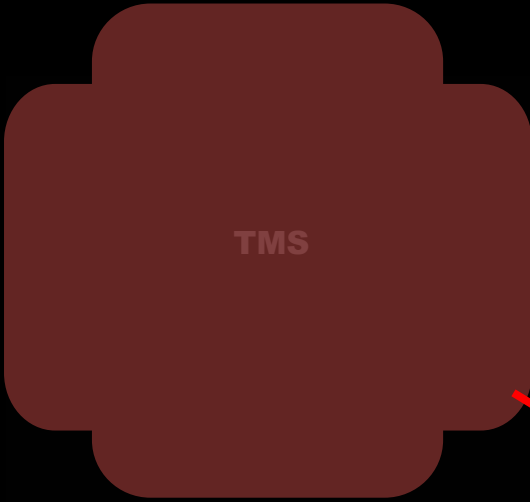
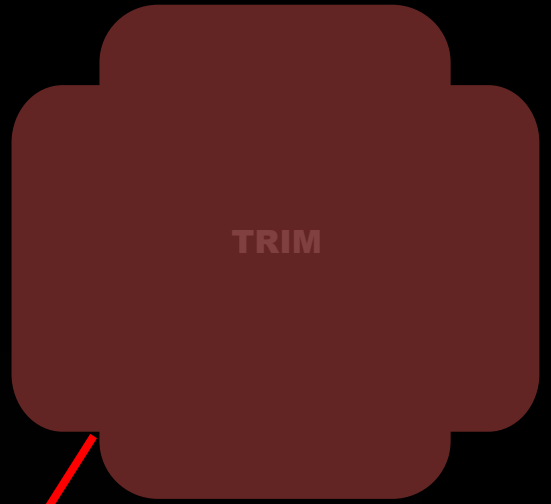
TMS

DMS

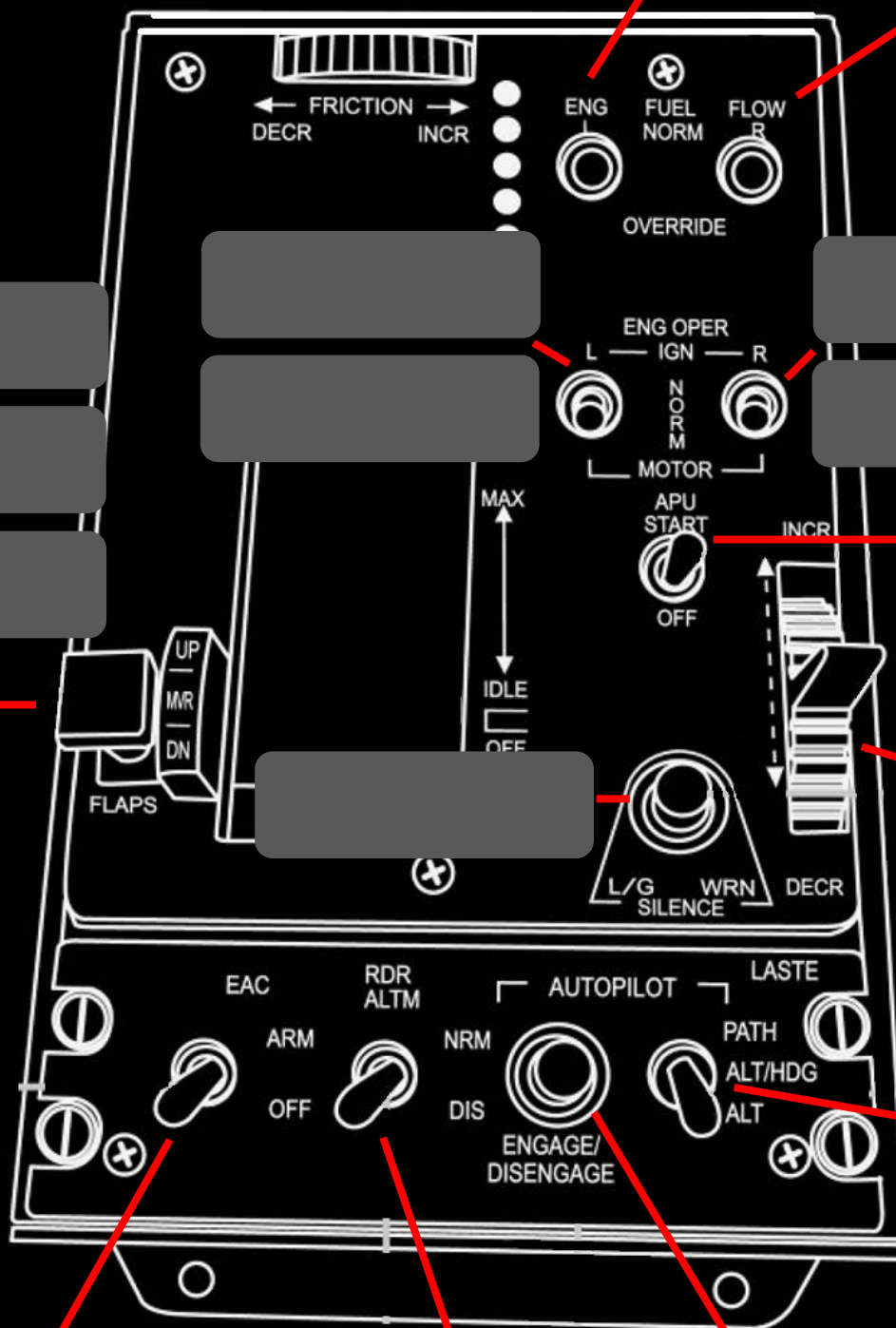
CMS

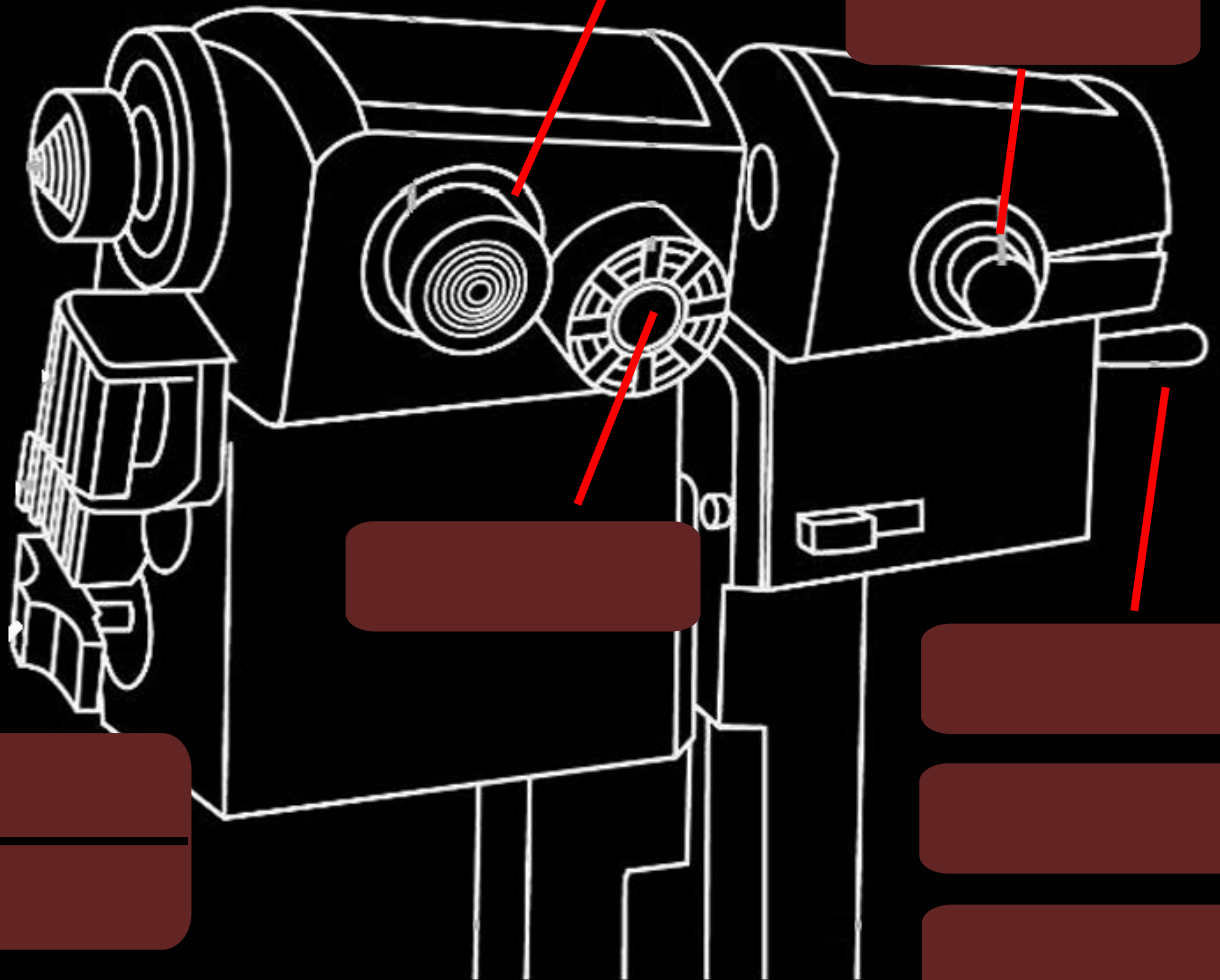
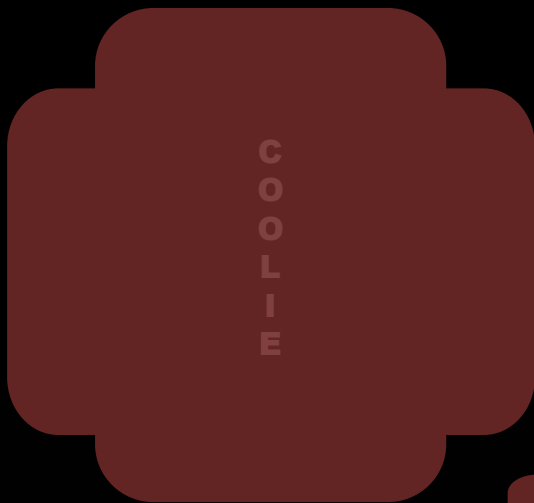
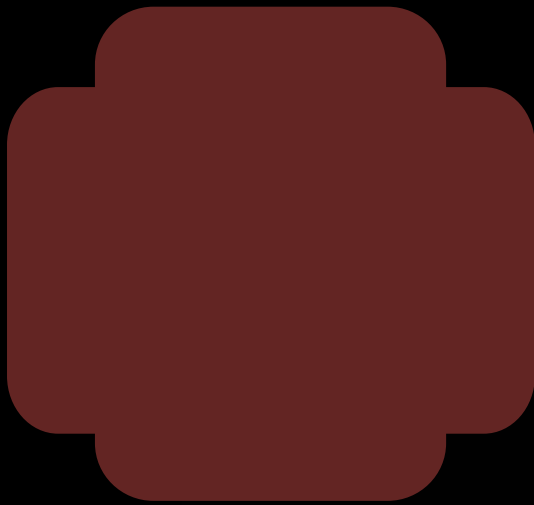
NWS

PADDLE

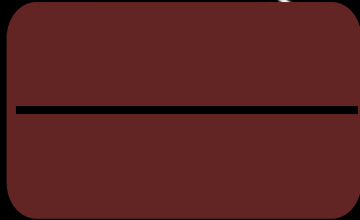


L THROTTLE R





SPD
BRK



BOAT
SWITCH



CHINA
HAT



START UP - Voice

1.	Refuel / Rearm-----	GROUND
2.	Cockpit Doors-----	CLOSED
3.	*POWER-----	ON
4.	*AVIONICS-----	STBY
5.	*RADIO-----	ON
6.	Nav. / Col. Lights set-----	AS NEEDED
7.	Set Throttle-----	100%
8.	Throttle down----- -----Button will pop up on Collective-----	20%
9.	Hold Starter until-----	RMP 40%
10.	Throttle Slow Forward at-----	RPM 65%
11.	Altimeter-----	ON
12.	Flares-----	Set Armed
13.	Weapons	Set Armed
14.	Rocket Pair-----	Set 1
15.	Gunner ROE	Set L / C / R

* = Talk

AUTO ROTATE

GOV	SET EMERGENCY
Cyclic	DOWN
Throttle	0%
Speed	80 kt
RPM	6600 RMP

FM Radio NAV

1.	Set FM Radio-----	## MHz Freq.
2.	Set Radio homing-----	HOME
3.	Sensitivity Switch-----	HIGH
4.	Fly Course Deviation	

NDB / ADF Navigation

1.	Confirm Khz Freq.-----	###
2.	ADF mode knob -----	SET TO ADF
3.	Frequency Tuner knob-----	Set ### Band
4.	Freq. Tuner----- ----Use Mouse Wheel-----	Scroll to ###
5.	Confirm Morse Code of NDB Freq.	
6.	Sensitivity Switch-----	HIGH
7.	Compass Pointer will point to NDB / ADF signal	

VOR / ILS Navigation

8.	NAV-COMM	ON
9.	Confirm runway ILS and heading	
10.	Frequency ###. ## -----Use 2 knobs-----	SET
11.	Confirm Morse Code of ILS Freq.	
12.	Sensitivity Switch	HIGH
13.	Course Deviation knob	
14.	Course Deviation Knob	SET to ILS HEADING
15.	CDI will align with heading and ILS Freq.	



L

